

The Santa Margarita Groundwater Agency (SMGWA) oversees groundwater management of the Santa Margarita Groundwater Basin in Santa Cruz County, California. The agency was formed in 2017 by the San Lorenzo Valley Water District, Scotts Valley Water District and the County of Santa Cruz to comply with the requirements of the Sustainable Groundwater Management Act (SGMA) of 2014. The SMGWA Board of Directors includes two representatives from each of the member agencies, one from the City of Scotts Valley, one from the City of Santa Cruz, one from the Mount Hermon Association Community Water System and two private well owner representatives.

Board of Directors

Gail Mahood, Chair

San Lorenzo Valley Water District

Chris Perri, Vice-Chair

Scotts Valley Water District

Edan Cassidy, Secretary

Well Owner Representative

Jack Dilles

City of Scotts Valley

Doug Engfer

City of Santa Cruz Water Department

Manu Koenig

County of Santa Cruz

Jeff Koopman

Well Owner Representative

Bruce McPherson

County of Santa Cruz

Dale Pollock

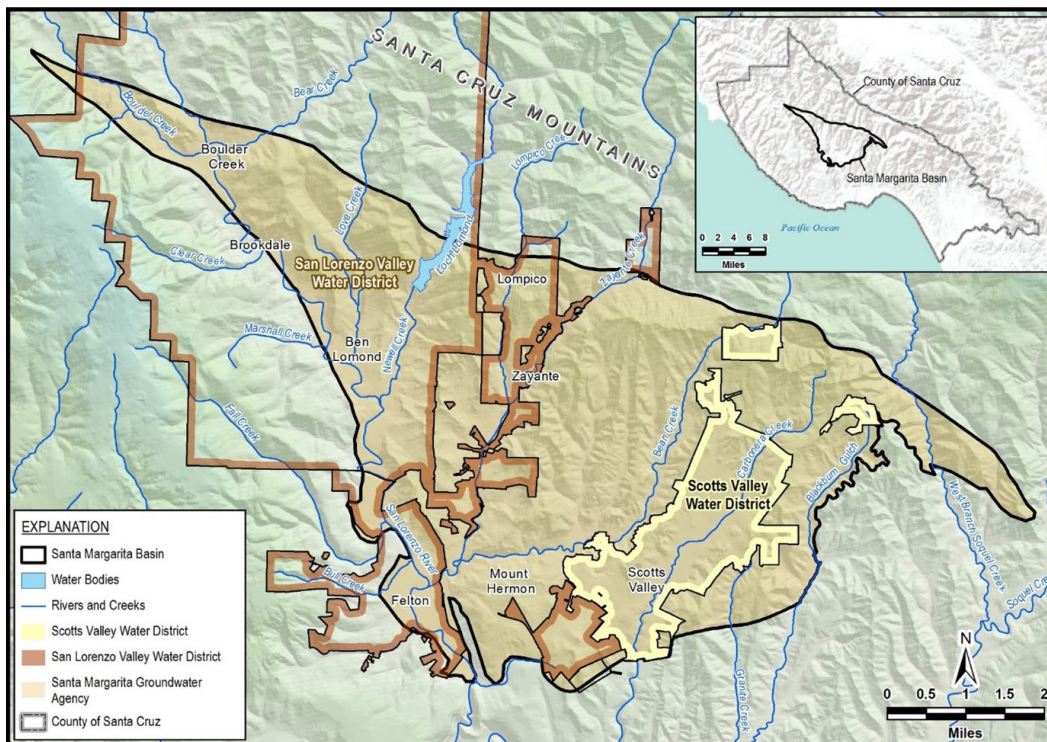
Mt. Hermon Association

Mark Smolley

San Lorenzo Valley Water District

Ruth Stiles

Scotts Valley Water District



The Santa Margarita Groundwater Basin covers an area of 34.8 square miles (22,249 acres). The Basin is home to an estimated 29,000 residents, and includes the City of Scotts Valley, and the communities of Boulder Creek, Brookdale, Ben Lomond, Lompico, Zayante, Felton and Mount Hermon. On average, groundwater meets about 80% of the Basin's water supply needs and feeds local streams to serve important habitat needs. To maintain local control of the Basin, SMGWA is required to develop and implement a Groundwater Sustainability Plan (GSP) and monitor and report on Basin conditions to the California Department of Water Resources (DWR).

Key Accomplishments:

- Secured \$1.6 million in State grants to support GSP development and improve the Basin monitoring network
- Developed a GSP with input from water suppliers, community members and technical experts to demonstrate groundwater sustainability by 2042 per SGMA requirements
- Submitted the GSP in January 2022 that was approved by DWR in April 2023
- Completed a groundwater monitoring network needed to demonstrate SGMA compliance
- Submitted Annual Reports since required beginning in 2022

2023 Water Conditions

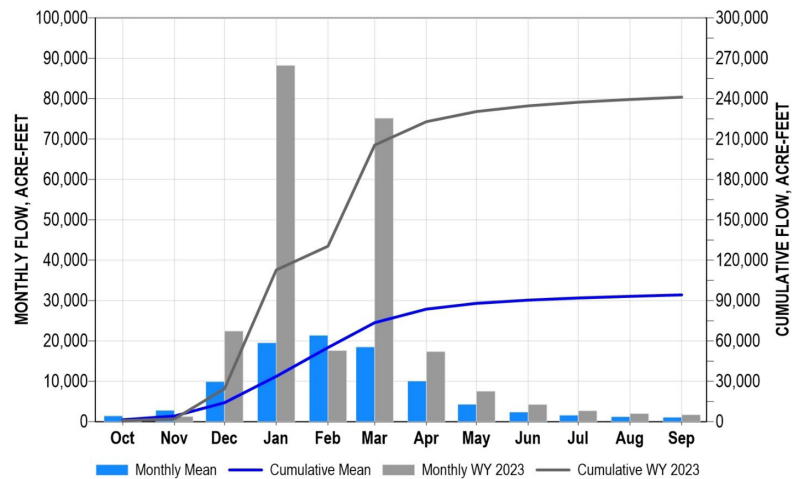
2023 Was a Wet Year!

- 71.0 inches of rain at Boulder Creek (140% of average)
- 53.8 inches of rain in Scotts Valley (130% of average)
- 241,000 acre-feet (AF) of annual flow measured on the San Lorenzo River at Big Trees (250% of average)

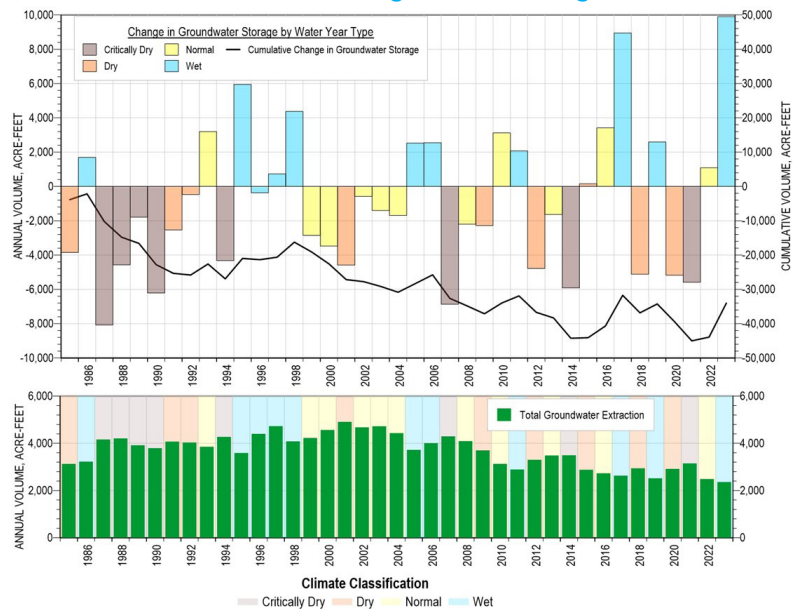
Basin Conditions Improved in 2023

- Lowest total water use dating to 1985 – 3,702 AF
- Lowest groundwater use dating to 1985 – 2,361 AF
- Wet year allowed Basin to use more surface water for supply, leaving groundwater in storage for future needs
- Estimated increase of groundwater in storage for year of 9,900 AF
- Saw improvements in all four SGMA sustainability indicators applicable in the Basin

Surface water flow on San Lorenzo River



Groundwater extraction and change in Basin storage



For more information, see the full Annual Report at www.smgwa.org/AnnualGSPReports



SGMA sustainability indicators used in the Basin

